

Description

Pipe temperature sensor is used for measuring temperature of fluids in pipes, containers etc. NTC thermistors as passive or Pt100 thermistors as active elements are applied as sensing elements.

Types

Tube lenght L=100 mm	CTS-1
Tube lenght L=200 mm	CTS-1-200
Tube lenght L=300 mm	CTS-1-300
Tube lenght L=400 mm	CTS-1-400
Tube lenght L=xxx mm	CTS-1-xxx
Tube lenght (Pt 100)	CTS-1-xxx/Pt

Tube and screwing joint of stainless steel CTS-1-xxx/Cr

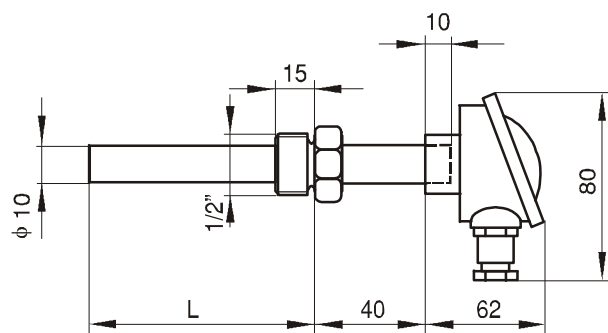


Technical data

* Type of sensing element:	NTC	Pt100
* Measuring range:	-50°C ... +150°C	-50°C... +150°C
* Nominal resistance value:	2k2 (t=25°C)	100Ω (t=0°C)
* Nominal pressure :	NP 16	NP25
* Degree of protection:	IP 65	IP 65
* Connection:	1/2"	1/2"
* Power supply:	5V DC	24V DC; 50mA
* Accuracy:	±(0,15 + 0,2%)	±(0,15 + 0,2%)
* Transmitter output signal:	-	4-20mA (2 wires)
* Case:	AlSi12	AlSi12
* Tube material:	Brass (stainless steel – optional)	Č.4580 (stainless steel)
* Cable inlet:	Pg 11	Pg 11

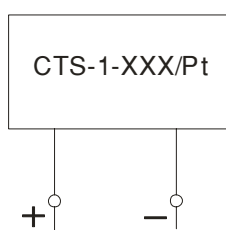
Mounting instructions

Pipe temperature sensor CTS-1 is fitted on pipelines or containers. It should be fitted on pipe against the direction of flow. Pipe joint should be sealed by teflon band. In the case of horizontal fitting, cable connection must be faced down. If the sensor has already been fitted, sensing element could be replaced without removing the whole sensor. Connection terminals are for wires up to 1.5 mm² according to wiring diagram through Pg 11 cable screw fitting. The maximum wire length is 100m.



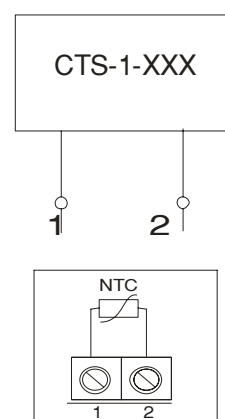
* protection tube (on request): Ø12 mm

Wiring diagram



- ⊕ ... external power supply 24V DC; 50mA
- ⊖ ... output signal 4-20mA

Wiring diagram



Feniks BB reserves the rights to alter its products without notice. All trademarks in this material are property of Feniks BB doo.

FENIKS BB

Cegarska 16
18000 Nis
Serbia
Data sheet 07/2009*

Tel. / Fax.
+381 18 45-75-333
+381 18 45-75-557

E-mail:
info@feniksbb.com
Web:
www.feniksbb.com